

SmartMan Manual – 1. Start 0. Install Software

V5.1 and later
(Updated 20 October 2011)

Installing SmartMan

The Software

This document provides instructions on how to download and install SmartMan version 5.1+ or later, plus how to install the correct USB driver.

This SmartMan software is specifically designed for Guidelines 2010 and runs on SmartMan manikins purchased after 1 April 2011 or which have been upgraded to the new guidelines after 1 April 2011.

Summary of Procedures

- Step 1:** Download and install software
- Step 2:** Manually install the USB Driver
- Step 3:** Start SmartMan

STEP 1: Download and Unzip the Software

Download: There is one version of the software regardless for SmartMan or Airway SmartMan. Download the software by clicking the link:

<http://www.ambusmartman.com/s-update.html>


Unzip: Double click on the file that you download. Follow the prompts on this self extracting file that will create the proper directories, install the SmartMan Software and create a shortcut on your desktop.

STEP 2: Install the USB Driver

If this is a first time installation of v5.1 SmartMan, you must install the USB driver.

- Plug in the USB cable and choose the option "Browse my computer for Driver software"
Do NOT allow windows to install a driver automatically.
Point to the driver files which will be located here:
C:\Program Files\SmartManv5.1\SmartManDriver
OR
C:\Program Files (x86)\SmartManv5.1\SmartManDriver
- Detailed driver installation help for different systems is below or can be found here:
<http://www.ambusmartman.com/sup-documents.html>

STEP 3: Start SmartMan

Simply click on the Icon 

Detail on Installing the SmartMan USB Drivers

Under Vista, XP and Win 7 all USB connected devices must load the correct drivers.

When you unzip the SmartMan software, it created a directory which contains the proper driver. You must tell the operating system to use these drivers.

The Procedure

Plug the USB cable in the manikin and into the computer.

You will see that Windows will detect a new device.

Windows will always ask if you "want to:

"Search automatically for updated software"

"Browse my computer for driver software"

Always choose the "Browse my computer option

The drivers are in one of two places depending on which operating system you have and whether it is 32 bit or 64 bit. Follow the onscreen instructions to point to one of the following locations:

C:\Program Files\SmartManv5.1\SmartManDriver

OR

C:\Program Files (x86)\SmartManv5.1\SmartManDriver

The operating system will take up to 2 minutes to copy and install the driver.

The following Details are covered below

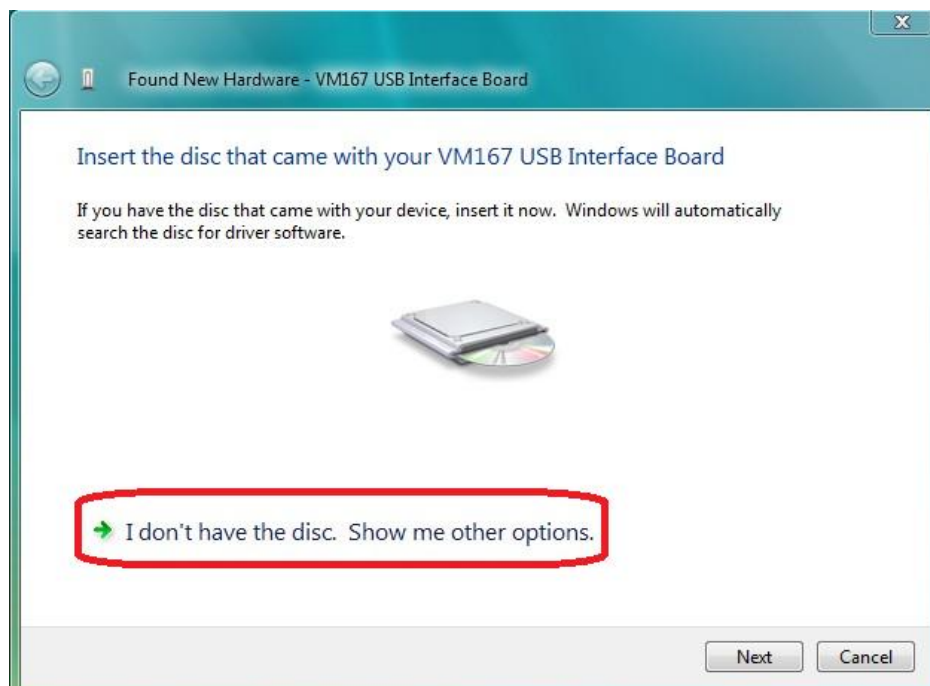
1. [Installing on a Vista Operating system](#)
2. [Installing on an XP Operating System](#)
3. [Installing on a Win 7 Operating System](#)
4. [4. How to install from the Device Manager](#)

1. Installing On a VISTA Operating System

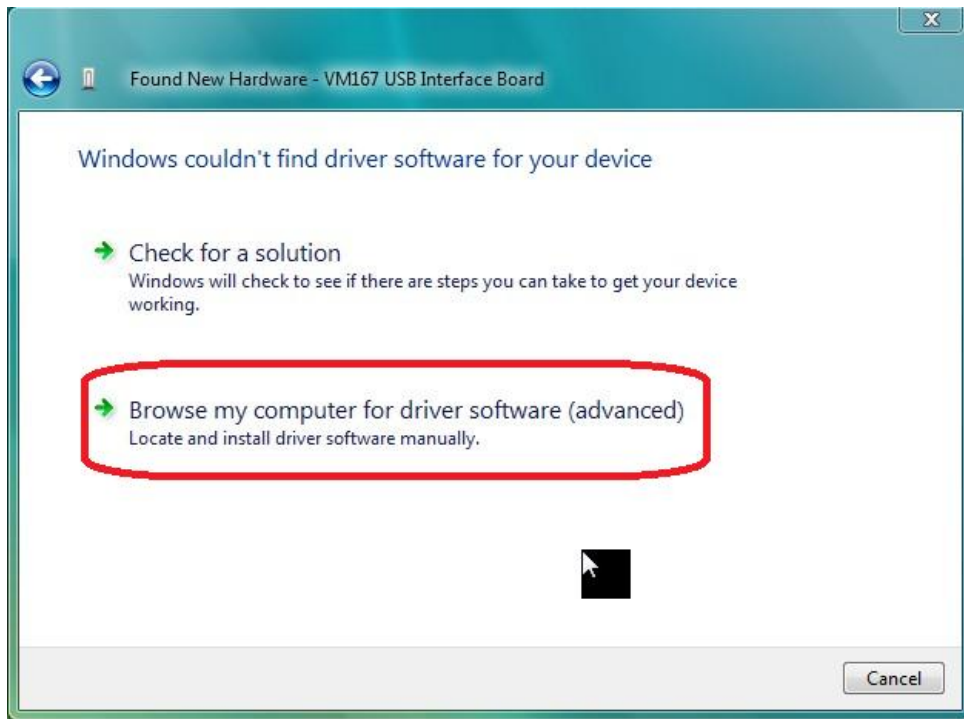
When you first plug in the USB cable Vista will attempt to install a new device. When you see the following message select the first option “Locate and install driver software”.



If you see the following message, select “I don't have the disc. Show me other options”.



This will bring up the following screen. Select the second option “Browse my computer for driver software”

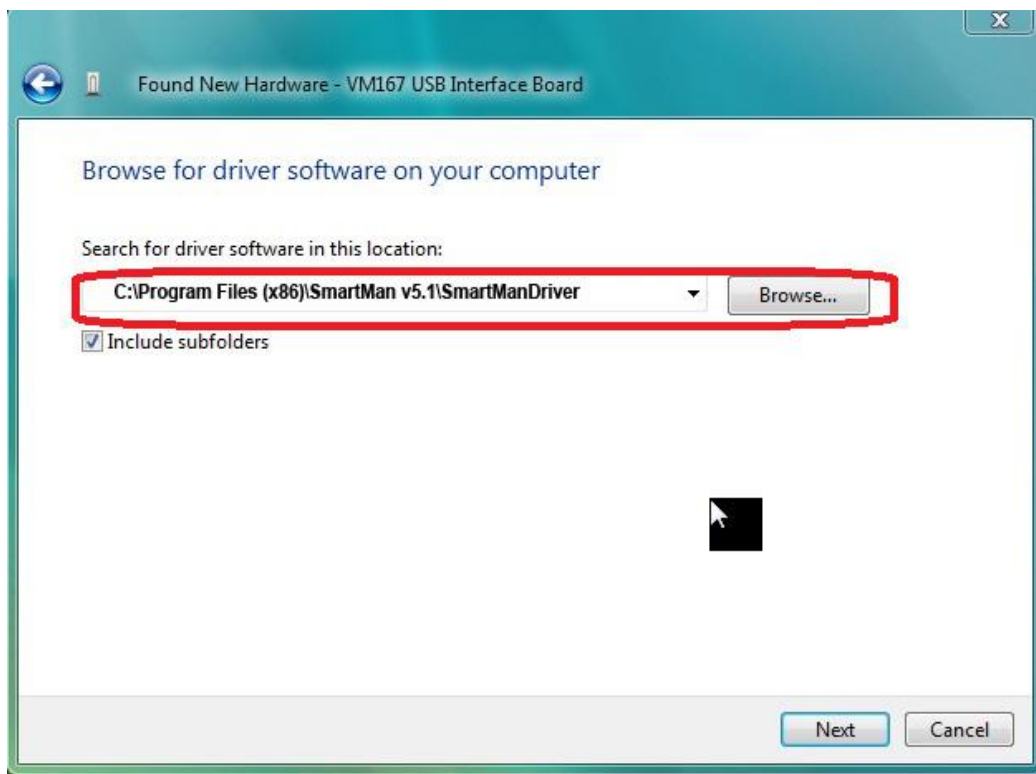


You will be given the chance to Browse for the driver. Click Browse and go to the following directory

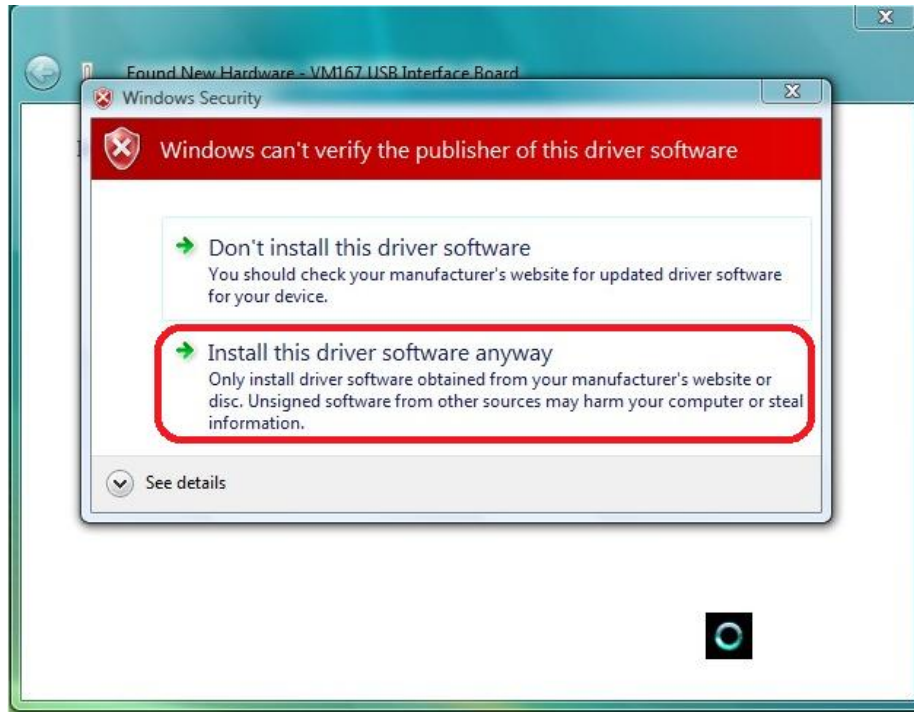
C:\Program Files\SmartManv5.1\SmartManDriver

OR

C:\Program Files (x86)\SmartManv5.1\SmartManDriver



If you see the following security message click, "Install this driver software anyway."



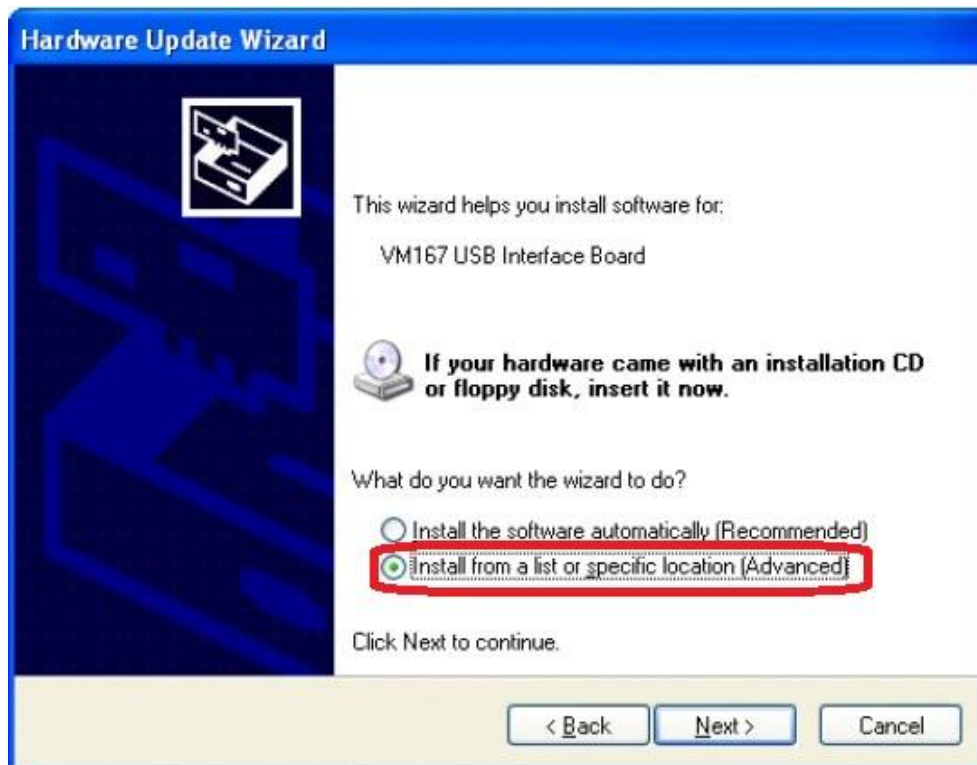
The operating system will take up to 2 minutes to copy and install the driver. It will tell you that the device has been installed correctly.

2. Installing on an XP Operating System

When you plug in the USB cable you will be prompted by Windows with the '**Found New hardware Wizard**'.



Select '**No, not this time**' and click '**Next**' to continue



Select **'Install from a list or specific location (Advanced)'** Click **'Next'** to continue.

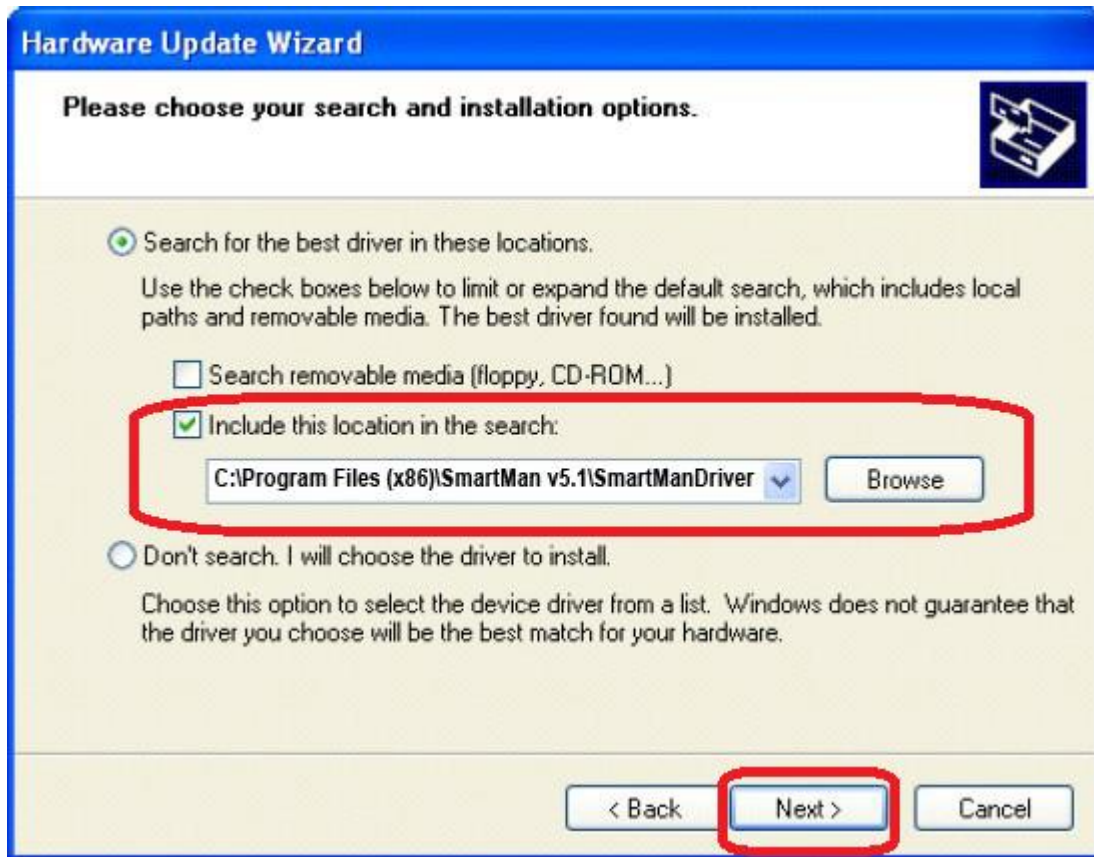
You will be asked for the location of your driver files.

Select **'Include this location in the search'** and browse to the following location

C:\Program Files\SmartManv5.1\SmartManDriver

OR

C:\Program Files (x86)\SmartManv5.1\SmartManDriver



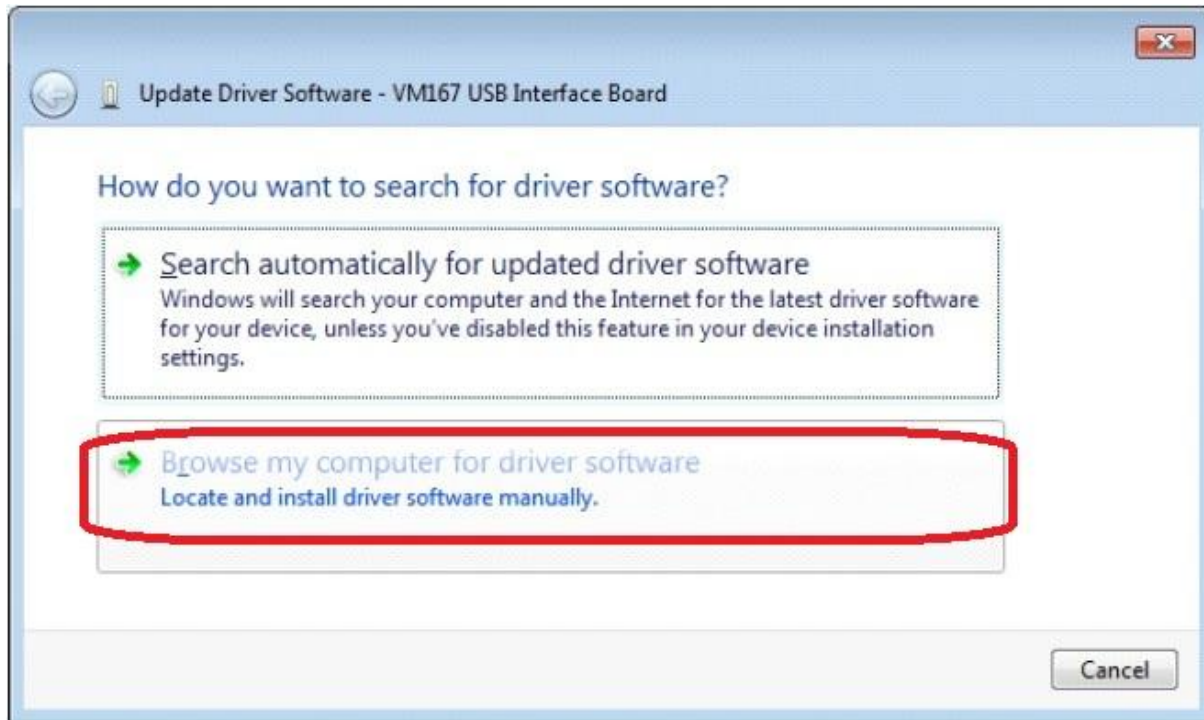
Click **'Next'** to continue.

If you receive a warning, click **'Continue Anyway'**. And then click **'Finish'**.

The operating system will take up to 2 minutes to copy and install the driver. It will tell you that the device has been installed correctly.

3. Installing on a Windows 7 (32/64 bit) Home, Pro, Ultimate, Enterprise Operating System

Plug the USB cable into the manikin and into the computer.
When the program asks to install the device, select '**Browse my computer for the driver software**' 'locate and install driver software manually.' This is the **second option**

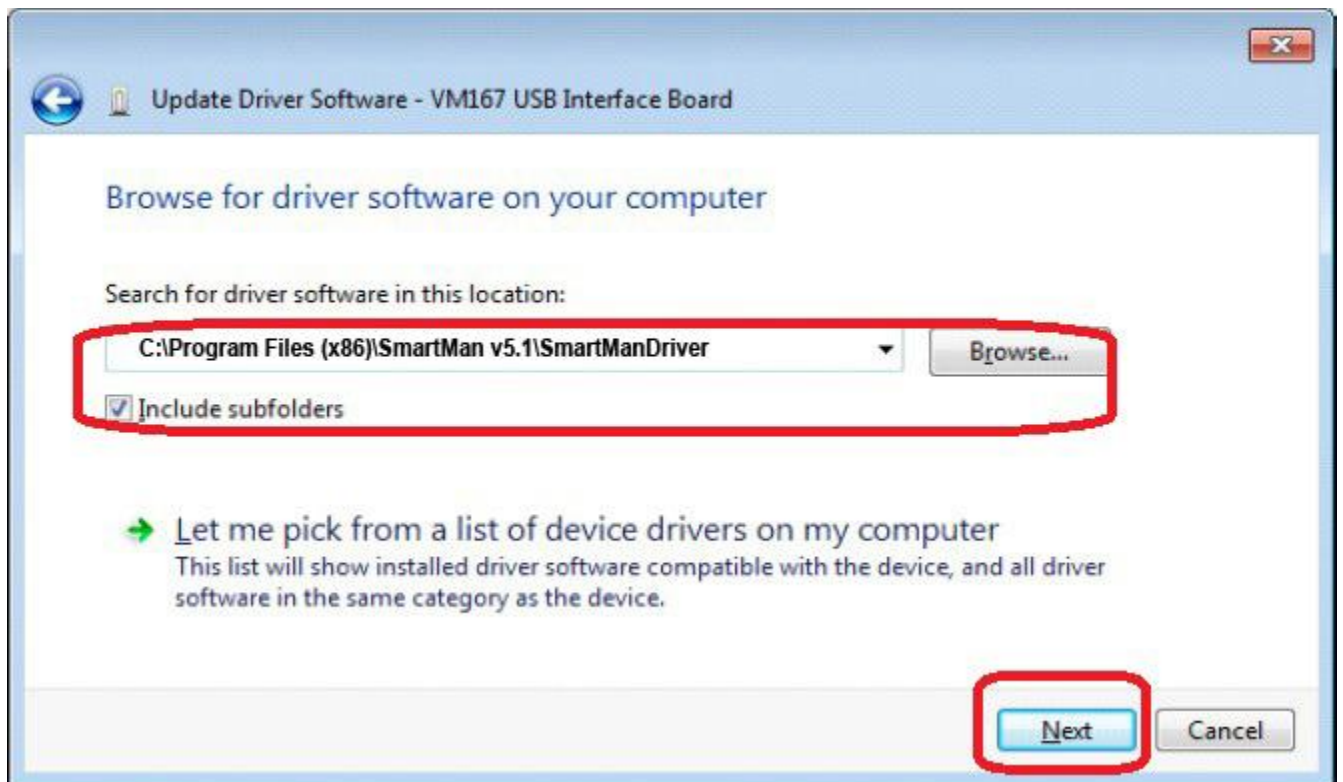


Locate the driver software here

C:\Program Files\SmartManv5.1\SmartManDriver

OR

C:\Program Files (x86)\SmartManv5.1\SmartManDriver



Click **'Next'** to continue.

When you receive the following warning, click **'Install this software anyway'**.



Installation of the drivers should now be complete.



The operating system will take up to 2 minutes to copy and install the driver. It will tell you that the device has been installed correctly.

4. Installing/Verifying Under Device Manager

All devices installed on your operating system will show in the Device Manager. When the USB is plugged in, it should show under “Customer USB Devices”.

Getting To Device manager

Option 1: Through the Control Panel

Click on 'START' then select 'Control Panel'



2. In Control Panel:

- If the display is in Large/Small icons, select 'Device Manager'
- If the display is in 'View By Category':
 - a) Select 'Hardware and Sound',
 - b) then 'Devices and Printers',
 - c) then 'Device manager'.

Option 2: From The start Button

At the start Button, type “Device Manager”.



After you type it, it will appear where the red arrow is in the above picture. Click on “Device Manager” when it appears.

What You Will See In Device Manager

SmartMan should appear as a Customer US Device, such as in the following Win 7 example. If it installed correctly it will appear as in the following table.



If it is not there, there is a problem and you will see something like the following with the yellow exclamation marked icon.



What to do in Device Manager

From device manager you are able to

- a) Install the SmartMan USB drivers from scratch, or
- b) Update the SmartMan USB drivers, or
- c) Delete the driver and re-install it again if required.

Option 1: Update Driver Software



The device you are looking for is the **VM167 USB Interface Board**.

It should be listed under Custom USB Devices, but if there is a problem it will likely show under Other Devices with the yellow exclamation icon.



The yellow triangle with the exclamation mark means that it has not been installed. Either it was never installed or there was an error during installation

Often the operating system will recognize the device but the drivers are not properly linked to it. If there is a yellow triangle with an exclamation mark, either the drivers were not installed or there was an error during installation.

Select VM167 USB Interface Board.

Right click and in the window select 'Update Driver Software'

Select to browse for the location of the SmartMan drivers. This will take you back to the beginning of the installation instructions listed above.

If that option to 'Update Driver Software' is not there on the menu, you most likely have just plugged the USB cable into your computer. Wait for about 5 minutes and see if it has finished or select the next option.

Another Way in Device Manager


When in the Device Manager, another option is to go to Actions in the top menu bar and install the driver from scratch. In order to have any option under Actions, you must select (click once) on

- Click on "Universal Serial Bus controllers"
- Click on Action
- Select "Add legacy hardware"

Welcome to the Add Hardware Wizard

This wizard helps you install driver software to support older devices that do not support Plug-and-Play and which are not automatically recognized by Windows.

You should only use this wizard if you are an advanced user or you have been directed here by technical support.

 **If your hardware came with an installation CD, it is recommended that you click Cancel to close this wizard and use the manufacturer's CD to install this hardware.**

To continue, click Next.

< Back **Next >** Cancel

Click Next

The wizard can help you install other hardware

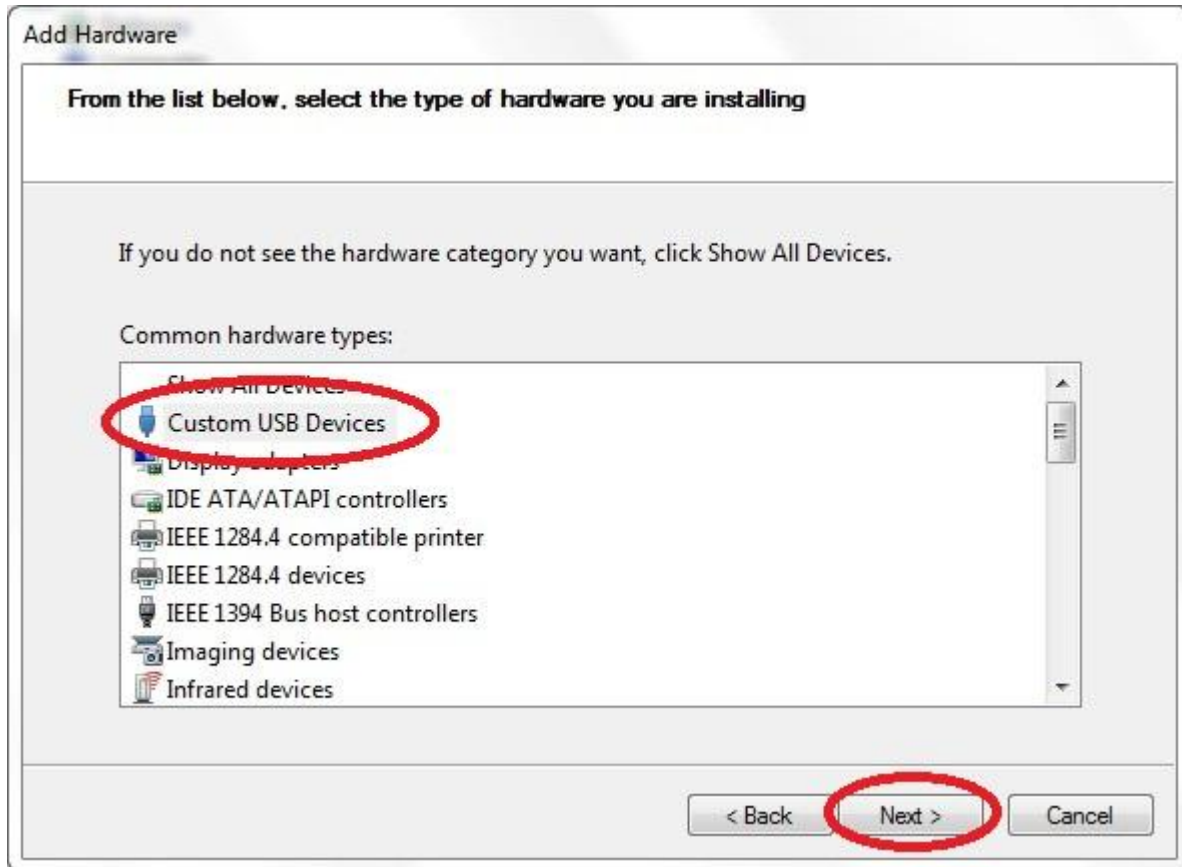
The wizard can search for other hardware and automatically install it for you. Or, if you know exactly which hardware model you want to install, you can select it from a list.

What do you want the wizard to do?

- Search for and install the hardware automatically (Recommended)
- Install the hardware that I manually select from a list (Advanced)**

< Back **Next >** Cancel

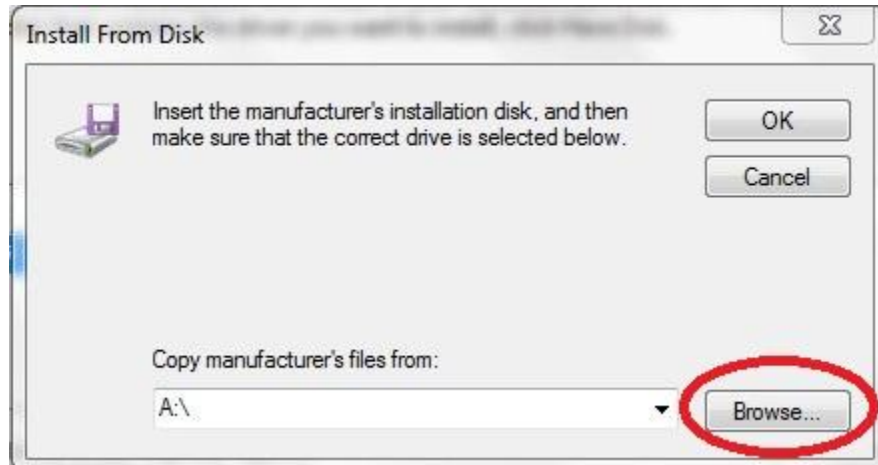
Select to “Install the hardware manually”.



Click on “Custom USB Devices”. Then click next.



If SmartMan is plugged in, it should find the VM167 USB Interface Card.
Click on Have Disk.



Click on browse.

Then point the drivers to

C:\Program Files\SmartManv5.1\SmartManDriver

OR

C:\Program Files (x86)\SmartManv5.1\SmartManDriver

STEP 3: Start SmartMan

Simply click on the Icon 